

# Backbox CV300

Cavity Backbox

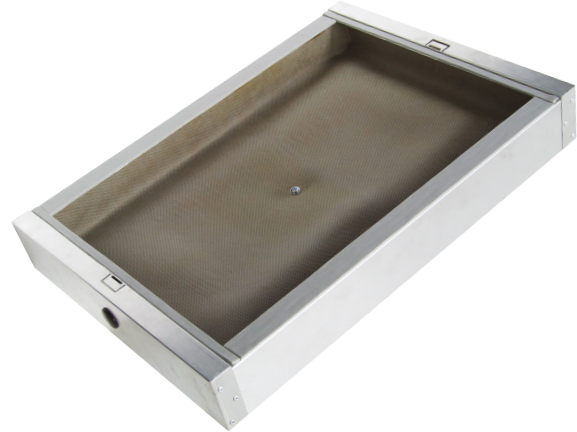
DATASHEET V2.2



## Product Description

The BackboxCV300 is an easy to install mounting option in plasterboard cavity walls (drywall) for Amina Invisible Loudspeakers with the dimensions 300mm x 400mm (iQ1, iQ2, iQ3).

The Backbox CV300 creates an acoustically tuned and consistent cavity behind the speaker, helping to ensure both consistent audio quality as well as minimising rearward airborne sound transmission.



## Installation

Designed to be retrofitted into a 12.5mm plasterboard wall or ceiling, the Backbox CV300 provides a consistent mounting platform to achieve correct loudspeaker alignment. The backbox should only make contact with the rear of the plasterboard and not touch the stud framework, this is to minimise the likelihood of mechanical noise transmission from the speaker into the structure of the building.

Please refer to the installation manual for full fitting details, including options for mounting speakers with shim kits into double-skinned plasterboard, or where board has a thickness other than 12.5mm.

## Sound Absorption Characteristics

When used with an Amina Invisible Loudspeaker, the BackboxCV300 offers an amount of airborne noise transmission reduction. With an average attenuation of 26dB between 150Hz-20KHz, the BackboxCV300 is the easiest way of mechanically fixing the loudspeaker to the plasterboard whilst also limiting rearward airborne transmission and helping to achieve consistent loudspeaker performance.

It is recommended that additional steps are taken to reduce rearward transmission if speakers are to be located in partition walls, or will back onto an adjacent occupied room (bedrooms above living spaces etc). For further information about reducing rearward transmission, please contact Amina technical support.

## Specifications

Dimensions

## BackboxCV300

450mm x 306mm x 71.5mm  
(17<sup>3/4</sup>" x 12" x 2<sup>13/16</sup>" )

Plasterboard cut-out required

405mm x 306mm

Weight

1.7Kg (3.75lbs)

Speaker cable entry

Rubber grommet (can be replaced by M20 gland)

Speaker fixing

4x self tapping flange-head screws (supplied)

Wall fixing

8x self tapping drywall screws (supplied)

Minimum cavity depth

75mm

Sound pressure attenuation

-26dB on average over 150Hz - 5kHz range

## Amina Technologies Limited

Cirrus House, Glebe Road, Huntingdon, Cambridgeshire, PE29 7DL, England  
T: +44 (0) 1480 354390 | E: info@aminasound.com | W: www.aminasound.com